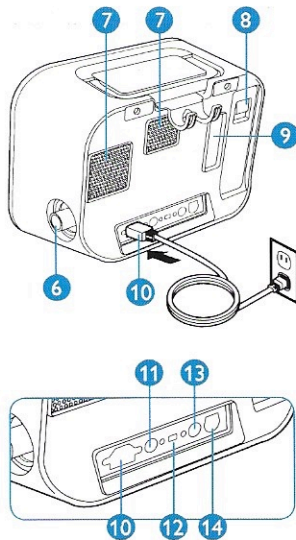
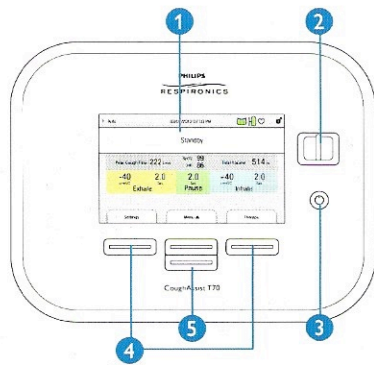


# 1 Device overview

- 1 Display screen
- 2 Manual switch to activate inhale (right) and exhale (left) phases
- 3 Power on/Power off
- 4 Perform action specified on screen
- 5 Navigate menus or change setup

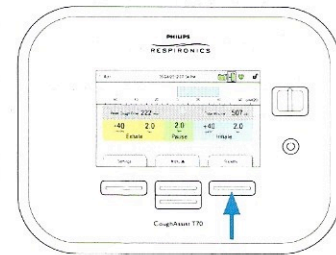
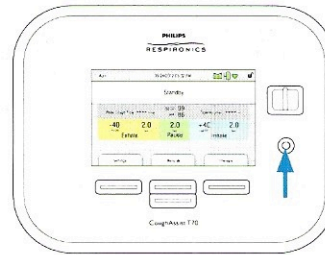


- 6 Breathing circuit connection
- 7 Fan exhaust – Air outlet must be kept uncovered
- 8 Detachable battery
- 9 Filter – Air inlet
- 10 AC power inlet
- 11 Remote control connector
- 12 USB connector (for service only)
- 13 SpO<sub>2</sub> connector
- 14 DC power inlet

**Note:** When the remote control foot pedal is connected, the manual switch is disabled.

# 2 Starting therapy

## How to start/stop therapy



### To start therapy

Connect the device to AC or DC power source or use the detachable battery

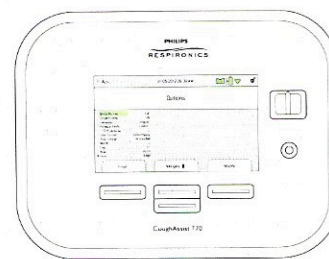
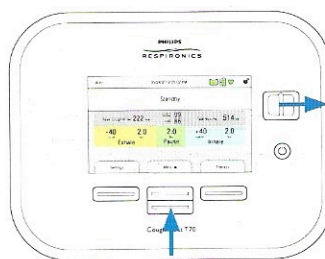
- Press to power on the device
- Select **Therapy** to start the treatment

### To stop therapy

- Select **Standby**
- To turn power off, press

## How to lock/unlock

Limited access (lock) permits the user to select between Preset therapy settings, while Full access (unlock) will allow the user to change all settings.



### To temporarily unlock the device

- While in Standby screen, press the down button below **Menu** and hold manual switch to the right for 5 seconds

**Note:** When appears on the main screen, the device is unlocked. If the Access menu is not set to Full, the device will switch automatically to limited access after 5 minutes of inactivity.

### To select access option

- Press the up button below **Menu**
- While 'Option' is highlighted in green press **Select**
- While 'Menu Access' is highlighted, press **Modify** and then **Edit** to select 'Limited' or 'Full' access
- Press **OK** to validate
- Press **Finish** and **Exit** to return to the main screen

